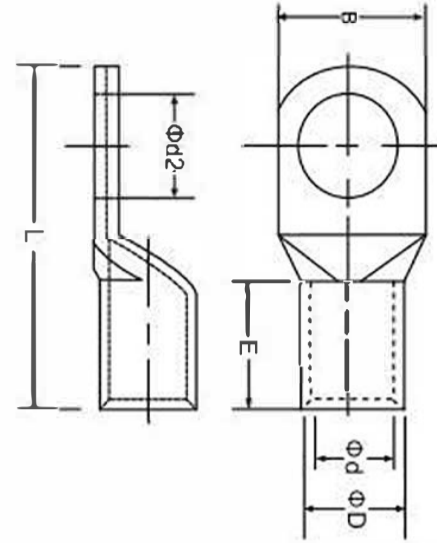


## Copper Tubular Lugs (Type DIN 46235)

Copper Tubular Lugs

Brand	KF®
Finish/Coating	Tinned
Base Materials	Copper
Insulation Material	N/A
Brazed	Seam
Wire/Cable Type	Regular Wire
Color Code	Standard
MOQ	1000Pcs/item
Payment Terms	Based on orders
Delivery	FOB/CIF/DDP



Spec(American AWG)	10	8	6	4	2	1/0	2/0	3/0
Spec(JIS AWG)	6	10	16	25	35	50	70	95
Spec(DIN AWG)								
Spec(GB mm²)								
Max Current	50	70	95	125	170	230	265	310

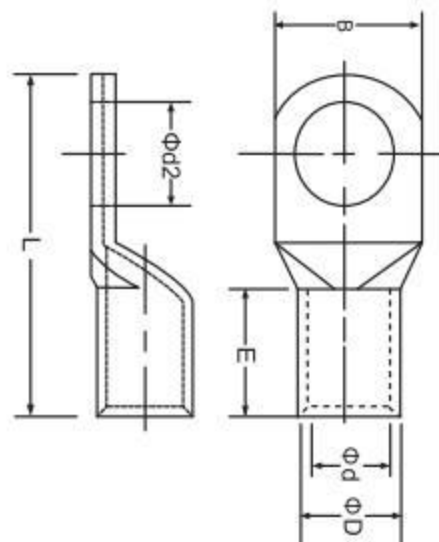


Wire Range	SKU#	MFG#	Stud Size		Dimension(mm)											Tool	pcs/pack		
			USA	Metric	d2	B	L	D	d	E									
A.W.G. 10 6mm²	KFLDI10	DIN6-5	#10	5	0.209	5.3	0.335	8.5	1.201	30.5	0.217	5.5	0.15	3.8	0.394	10.0	IZUMI 5N18	300	
	KFLDI11	DIN6-6	1/4"	6	0.252	6.4	0.335	8.5	1.24	31.5	0.217	5.5	0.15	3.8	0.394	10.0		300	
	KFLDI12	DIN6-8	5/16"	8	0.331	8.4	0.512	13.0	1.339	34.0	0.217	5.5	0.15	3.8	0.394	10.0		300	
A.W.G. 8 10mm²	KFLDI20	DIN10-5	#10	5	0.209	5.3	0.354	9.0	1.339	34.0	0.236	6.0	0.177	4.5	0.394	10.0	IZUMI 5N18	300	
	KFLDI21	DIN10-6	1/4"	6	0.252	6.4	0.354	9.0	1.358	34.5	0.236	6.0	0.177	4.5	0.394	10.0		300	
	KFLDI22	DIN10-8	5/16"	8	0.331	8.4	0.512	13.0	1.457	37.0	0.236	6.0	0.177	4.5	0.394	10.0		300	
	KFLDI23	DIN10-10	3/8"	10	0.413	10.5	0.591	15.0	1.535	39.0	0.236	6.0	0.177	4.5	0.394	10.0		300	
A.W.G. 6 16mm²	KFLDI30	DIN16-6	1/4"	6	0.252	6.4	0.512	13.0	1.713	43.5	0.335	8.5	0.217	5.5	0.787	20.0	OPT TP-150D	100	
	KFLDI31	DIN16-8	5/16"	8	0.331	8.4	0.512	13.0	1.811	46.0	0.335	8.5	0.217	5.5	0.787	20.0		100	
	KFLDI32	DIN16-10	3/8"	10	0.413	10.5	0.669	17.0	1.89	48.0	0.335	8.5	0.217	5.5	0.787	20.0		100	
	KFLDI33	DIN16-12	1/2"	12	0.512	13.0	0.709	18.0	1.929	49.0	0.335	8.5	0.217	5.5	0.787	20.0		100	
A.W.G. 4 25mm²	KFLDI40	DIN25-6	1/4"	6	0.252	6.4	0.551	14.0	1.791	45.5	0.394	10.0	0.276	7.0	0.787	20.0	OPT TP-150D	100	
	KFLDI41	DIN25-8	5/16"	8	0.331	8.4	0.630	16.0	1.89	48.0	0.394	10.0	0.276	7.0	0.787	20.0		100	
	KFLDI42	DIN25-10	3/8"	10	0.413	10.5	0.669	17.0	1.969	50.0	0.394	10.0	0.276	7.0	0.787	20.0		100	
	KFLDI43	DIN25-12	1/2"	12	0.512	13.0	0.748	19.0	2.008	51.0	0.394	10.0	0.276	7.0	0.787	20.0		100	
A.W.G. 2 35mm²	KFLDI50	DIN35-6	1/4"	6	0.252	6.4	0.669	17.0	1.949	49.5	0.492	12.5	0.323	8.2	0.787	20.0	OPT TP-150D	100	
	KFLDI51	DIN35-8	5/16"	8	0.331	8.4	0.669	17.0	2.047	52.0	0.492	12.5	0.323	8.2	0.787	20.0		100	
	KFLDI52	DIN35-10	3/8"	10	0.413	10.5	0.748	19.0	2.126	54.0	0.492	12.5	0.323	8.2	0.787	20.0		100	
	KFLDI53	DIN35-12	1/2"	12	0.512	13.0	0.827	21.0	2.165	55.0	0.492	12.5	0.323	8.2	0.787	20.0		100	
A.W.G. 1/0 50mm²	KFLDI54	DIN35-14	9/16"	14	0.591	15.0	0.827	21.0	2.224	56.5	0.492	12.5	0.323	8.2	0.787	20.0	OPT TP-150D	100	
	KFLDI60	DIN50-8	5/16"	8	0.331	8.4	0.787	20.0	2.441	62.0	0.571	14.5	0.394	10.0	1.102	28.0		100	
	KFLDI61	DIN50-10	3/8"	10	0.413	10.5	0.866	22.0	2.52	64.0	0.571	14.5	0.394	10.0	1.102	28.0		100	
	KFLDI62	DIN50-12	1/2"	12	0.512	13.0	0.945	24.0	2.559	65.0	0.571	14.5	0.394	10.0	1.102	28.0		100	
A.W.G. 2/0 70mm²	KFLDI63	DIN50-14	9/16"	14	0.591	15.0	0.945	24.0	2.618	66.5	0.571	14.5	0.394	10.0	1.102	28.0	OPT TP-150D	100	
	KFLDI64	DIN50-16	5/8"	16	0.669	17.0	1.102	28.0	2.677	68.0	0.571	14.5	0.394	10.0	1.102	28.0		100	
	KFLDI70	DIN70-8	5/16"	8	0.331	8.4	0.945	24.0	2.559	65.0	0.65	16.5	0.453	11.5	1.102	28.0		OPT TP-150D	30
	KFLDI71	DIN70-10	3/8"	10	0.413	10.5	0.945	24.0	2.638	67.0	0.65	16.5	0.453	11.5	1.102	28.0			30
KFLDI72	DIN70-12	1/2"	12	0.512	13.0	0.945	24.0	2.677	68.0	0.65	16.5	0.453	11.5	1.102	28.0	30			
KFLDI73	DIN70-14	9/16"	14	0.591	15.0	0.945	24.0	2.736	69.5	0.65	16.5	0.453	11.5	1.102	28.0	30			
A.W.G. 3/0 95mm²	KFLDI74	DIN70-16	5/8"	16	0.669	17.0	1.181	30.0	2.795	71.0	0.65	16.5	0.453	11.5	1.102	28.0	OPT TP-150D	30	
	KFLDI80	DIN95-8	5/16"	8	0.331	8.4	1.102	28.0	3.031	77.0	0.748	19.0	0.531	13.5	1.378	35.0		30	
	KFLDI81	DIN95-10	3/8"	10	0.413	10.5	1.102	28.0	3.031	77.0	0.748	19.0	0.531	13.5	1.378	35.0		30	
	KFLDI82	DIN95-12	1/2"	12	0.512	13.0	1.102	28.0	3.071	78.0	0.748	19.0	0.531	13.5	1.378	35.0		30	
	KFLDI83	DIN95-14	9/16"	14	0.591	15.0	1.102	28.0	3.13	79.5	0.748	19.0	0.531	13.5	1.378	35.0		30	
KFLDI84	DIN95-16	5/8"	16	0.669	17.0	1.26	32.0	3.189	81.0	0.748	19.0	0.531	13.5	1.378	35.0	30			



**Copper Tubular Lugs (Type DIN 46235)**

Brand	KF <sup>®</sup>
Finish/Coating	Tinned
Base Materials	Copper
Insulation Material	N/A
Brazed	Seam
Wire/Cable Type	Regular Wire
Color Code	Standard
MOQ	1000Pcs/item
Payment Terms	Based on orders
Delivery	FOB/CIF/DDP



Spec(American AWG)	4/0	250/300MCM	300/350MCM	400MCM	500MCM	600/750MCM
Spec(JIS AWG)	120	150	185	240	300	400
Spec(DIN AWG)						
Spec(GB mm <sup>2</sup> )						
Max Current	360	445	505	545	620	785
Spec(American AWG)	800/1000MCM	1000/1500MCM	1500/1750MCM	2000MCM		
Spec(JIS AWG)	500	630	800	1000		
Spec(DIN AWG)						
Spec(GB mm <sup>2</sup> )						
Max Current	935	1065	1280	1385		



Wire Range	SKU#	MFG#	Stud Size		Dimension(mm)											Tool	pcs/pack	
			USA	Metric	d2	B	L	D	d	E								
A.W.G. 4/0 120mm <sup>2</sup>	KFLDI90	DIN120-10	3/8"	10	0.413	10.5	1.181	30.0	3.346	85.0	0.827	21.0	0.61	15.5	1.378	35.0	IZUMI EP-520C	20
	KFLDI91	DIN120-12	1/2"	12	0.512	13.0	1.181	30.0	3.386	86.0	0.827	21.0	0.61	15.5	1.378	35.0		20
	KFLDI92	DIN120-14	9/16"	14	0.591	15.0	1.181	30.0	3.465	88.0	0.827	21.0	0.61	15.5	1.378	35.0		20
	KFLDI93	DIN120-16	5/8"	16	0.669	17.0	1.181	30.0	3.504	89.0	0.827	21.0	0.61	15.5	1.378	35.0		20
	KFLDI94	DIN120-20	3/4"	20	0.827	21.0	1.496	38.0	3.583	91.0	0.827	21.0	0.61	15.5	1.378	35.0		20
A.W.G.250/300MCM 150mm <sup>2</sup>	KFLDIA0	DIN150-10	3/8"	10	0.413	10.5	1.339	34.0	3.661	93.0	0.925	23.5	0.669	17.0	1.378	35.0	IZUMI EP-520C	10
	KFLDIA1	DIN150-12	1/2"	12	0.512	13.0	1.339	34.0	3.701	94.0	0.925	23.5	0.669	17.0	1.378	35.0		10
	KFLDIA2	DIN150-14	9/16"	14	0.591	15.0	1.339	34.0	3.819	97.0	0.925	23.5	0.669	17.0	1.378	35.0		10
	KFLDIA3	DIN150-16	5/8"	16	0.669	17.0	1.339	34.0	3.819	97.0	0.925	23.5	0.669	17.0	1.378	35.0		10
	KFLDIA4	DIN150-20	3/4"	20	0.827	21.0	1.575	40.0	3.898	99.0	0.925	23.5	0.669	17.0	1.378	35.0		10
A.W.G.300/350MCM 185mm <sup>2</sup>	KFLDIB0	DIN185-10	3/8"	10	0.413	10.5	1.457	37.0	3.819	97.0	1.004	25.5	0.748	19.0	1.575	40.0	IZUMI EP-520C	10
	KFLDIB1	DIN185-12	1/2"	12	0.512	13.0	1.457	37.0	3.858	98.0	1.004	25.5	0.748	19.0	1.575	40.0		10
	KFLDIB2	DIN185-14	9/16"	14	0.591	15.0	1.457	37.0	3.976	101.0	1.004	25.5	0.748	19.0	1.575	40.0		10
	KFLDIB3	DIN185-16	5/8"	16	0.669	17.0	1.457	37.0	3.976	101.0	1.004	25.5	0.748	19.0	1.575	40.0		10
	KFLDIB4	DIN185-20	3/4"	20	0.827	21.0	1.575	40.0	4.055	103.0	1.004	25.5	0.748	19.0	1.575	40.0		10
A.W.G.400MCM 240mm <sup>2</sup>	KFLDIC0	DIN240-10	1/2"	10	0.512	13.0	1.654	42.0	4.252	108.0	1.142	29.0	0.846	21.5	1.575	40.0	IZUMI EP-520C	10
	KFLDIC1	DIN240-12	9/16"	12	0.591	15.0	1.654	42.0	4.37	111.0	1.142	29.0	0.846	21.5	1.575	40.0		10
	KFLDIC2	DIN240-14	5/8"	14	0.669	17.0	1.654	42.0	4.37	111.0	1.142	29.0	0.846	21.5	1.575	40.0		10
	KFLDIC3	DIN240-16	3/4"	16	0.827	21.0	1.772	45.0	4.449	113.0	1.142	29.0	0.846	21.5	1.575	40.0		10
A.W.G.500MCM 300mm <sup>2</sup>	KFLDID0	DIN300-12	1/2"	12	0.512	13.0	1.811	46.0	4.685	119.0	1.26	32.0	0.965	24.5	1.969	50.0	IZUMI EP-1000A	6
	KFLDID1	DIN300-14	9/16"	14	0.591	15.0	1.811	46.0	4.685	119.0	1.26	32.0	0.965	24.5	1.969	50.0		6
	KFLDID2	DIN300-16	5/8"	16	0.669	17.0	1.811	46.0	4.685	119.0	1.26	32.0	0.965	24.5	1.969	50.0		6
	KFLDID3	DIN300-20	3/4"	20	0.827	21.0	1.811	46.0	4.803	122.0	1.26	32.0	0.965	24.5	1.969	50.0		6
A.W.G.600/750MCM 400mm <sup>2</sup>	KFLDIE0	DIN400-14	9/16"	14	0.591	15.0	2.165	55.0	5.512	140.0	1.516	38.5	1.083	27.5	2.756	70.0	IZUMI EP-1000A	4
	KFLDIE1	DIN400-16	5/8"	16	0.669	17.0	2.165	55.0	5.512	140.0	1.516	38.5	1.083	27.5	2.756	70.0		4
	KFLDIE2	DIN400-20	3/4"	20	0.827	21.0	2.165	55.0	5.512	140.0	1.516	38.5	1.083	27.5	2.756	70.0		4
A.W.G.800/1000MCM 500mm <sup>2</sup>	KFLDIF0	DIN500-16	5/8"	16	0.669	17.0	2.362	60.0	5.906	150.0	1.654	42.0	1.22	31.0	2.756	70.0	IZUMI EP-1000A	1
	KFLDIF1	DIN500-20	3/4"	20	0.827	21.0	2.362	60.0	5.906	150.0	1.654	42.0	1.22	31.0	2.756	70.0		1
A.W.G.1000/1500MCM 625mm <sup>2</sup>	KFLDIG0	DIN630-16	5/8"	16	0.669	17.0	2.52	64.0	6.299	160.0	1.732	44.0	1.358	34.5	3.15	80.0	IZUMI EP-1000A	5
	KFLDIG1	DIN630-20	3/4"	20	0.827	21.0	2.52	64.0	6.299	160.0	1.732	44.0	1.358	34.5	3.15	80.0		5
A.W.G.1500/1750MCM 800mm <sup>2</sup>	KFLDIH0	DIN800-16	5/8"	16	0.669	17.0	2.953	75.0	7.677	195.0	2.047	52.0	1.575	40.0	3.937	100.0	IZUMI EP-1000A	1
	KFLDIH1	DIN800-20	3/4"	20	0.827	21.0	2.953	75.0	7.677	195.0	2.047	52.0	1.575	40.0	3.937	100.0		1
A.W.G.2000MCM 1000mm <sup>2</sup>	KFLDII1	DIN1000-16	5/8"	16	0.669	17.0	3.346	85.0	7.677	195.0	2.283	58.0	1.732	44.0	3.937	100.0	IZUMI EP-1000A	1
	KFLDII2	DIN1000-20	3/4"	20	0.827	21.0	3.346	85.0	7.677	195.0	2.283	58.0	1.732	44.0	3.937	100.0		1