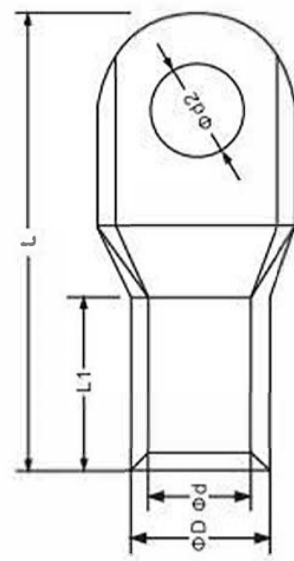


Copper Tubular Lugs (Type DTGA)

Brand	KF [®]
Finish/Coating	Tinned
Base Materials	Copper
Insulation Material	N/A
Brazed	Seam
Wire/Cable Type	Regular Wire
Color Code	Standard
MOQ	1000Pcs/item
Payment Terms	Based on orders
Delivery	FOB/CIF/DDP



Spec(American AWG)	16	14	12	10	8	6	4	2
Spec(JIS AWG)	1.5	2.5	4	6	10	16	25	35
Spec(DIN AWG)								
Spec(GB mm ²)								
Max Current	18	30	35	50	70	95	125	170

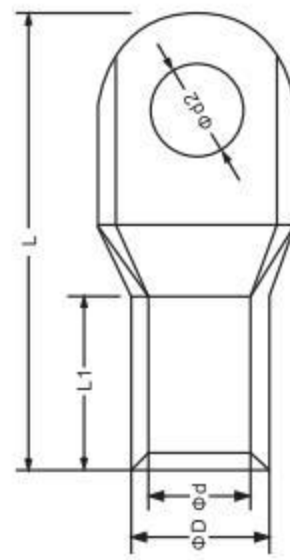
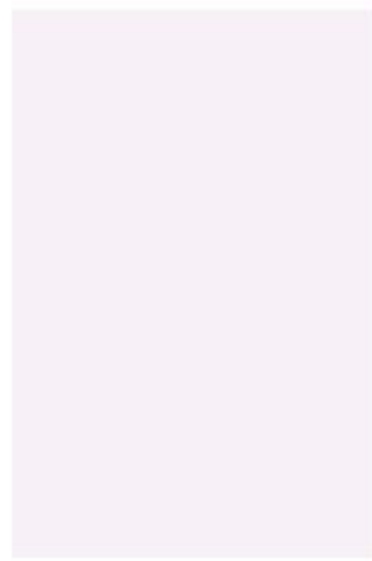


Wire Range	SKU#	MFG#	Stud Size		Dimension(mm)										Tool	pcs/pack		
			USA	Metric	d2	B	L	D	d	E								
A.W.G. 16 1.5mm ²	KFLDA10	SC1.5-4	#8	4	0.169	4.3	0.295	7.5	0.709	18.0	0.122	3.1	0.075	1.9	0.256	6.5	IZUMI 5N18	1000
	KFLDA11	SC1.5-5	#10	5	0.205	5.2	0.315	8.0	0.709	18.0	0.122	3.1	0.075	1.9	0.256	6.5		1000
	KFLDA12	SC1.5-6	1/4"	6	0.256	6.5	0.362	9.2	0.709	18.0	0.134	3.4	0.075	1.9	0.256	6.5		1000
A.W.G. 14 2.5mm ²	KFLDA20	SC2.5-4	#8	4	0.169	4.3	0.315	8.0	0.748	19.0	0.157	4.0	0.11	2.8	0.276	7.0	IZUMI 5N18	1000
	KFLDA21	SC2.5-5	#10	5	0.205	5.2	0.32	8.0	0.787	20.0	0.157	4.0	0.11	2.8	0.276	7.0		1000
	KFLDA22	SC2.5-6	1/4"	6	0.256	6.5	0.36	9.2	0.787	20.0	0.157	4.0	0.102	2.6	0.276	7.0		1000
A.W.G. 12 4mm ²	KFLDA30	SC4-4	#8	4	0.169	4.3	0.315	8.0	0.768	19.5	0.177	4.5	0.126	3.2	0.295	7.5	IZUMI 5N18	1000
	KFLDA31	SC4-5	#10	5	0.205	5.2	0.315	8.0	0.807	20.5	0.177	4.5	0.126	3.2	0.295	7.5		1000
	KFLDA32	SC4-6	1/4"	6	0.256	6.5	0.362	9.2	0.866	22.0	0.177	4.5	0.126	3.2	0.295	7.5		1000
	KFLDA33	SC4-8	5/16"	8	0.335	8.5	0.472	12.0	0.925	23.5	0.189	4.8	0.126	3.2	0.295	7.5		1000
A.W.G. 10 6mm ²	KFLDA40	SC6-5	#10	5	0.205	5.2	0.362	9.2	0.866	22.0	0.201	5.1	0.146	3.7	0.315	8.0	IZUMI 5N18	500
	KFLDA41	SC6-6	1/4"	6	0.256	6.5	0.386	9.8	0.91	23.0	0.201	5.1	0.146	3.7	0.315	8.0		500
	KFLDA42	SC6-8	5/16"	8	0.335	8.5	0.472	12.0	0.95	24.0	0.209	5.3	0.146	3.7	0.315	8.0		500
	KFLDA43	SC6-10	3/8"	10	0.406	10.3	0.504	12.8	0.95	24.0	0.209	5.3	0.146	3.7	0.315	8.0		500
A.W.G. 8 10mm ²	KFLDA50	SC10-5	#10	5	0.205	5.2	0.406	10.3	0.945	24.0	0.24	6.1	0.177	4.5	0.354	9.0	IZUMI 5N18	500
	KFLDA51	SC10-6	1/4"	6	0.256	6.5	0.406	10.3	0.945	24.0	0.24	6.1	0.177	4.5	0.354	9.0		500
	KFLDA52	SC10-8	5/16"	8	0.335	8.5	0.472	12.0	0.984	25.0	0.24	6.1	0.177	4.5	0.354	9.0		500
	KFLDA53	SC10-10	3/8"	10	0.406	10.3	0.52	13.2	1.043	26.5	0.248	6.3	0.177	4.5	0.354	9.0		500
A.W.G. 6 16mm ²	KFLDA60	SC16-6	1/4"	6	0.256	6.5	0.433	11.0	1.083	27.5	0.287	7.3	0.224	5.7	0.433	11.0	OPT TP-150D	500
	KFLDA61	SC16-8	5/16"	8	0.335	8.5	0.492	12.5	1.16	29.5	0.29	7.3	0.224	5.7	0.433	11.0		500
	KFLDA62	SC16-10	3/8"	10	0.413	10.5	0.551	14.0	1.18	30.0	0.3	7.5	0.224	5.7	0.433	11.0		500
A.W.G. 4 25mm ²	KFLDA70	SC25-6	1/4"	6	0.256	6.5	0.516	13.1	1.28	32.5	0.354	9.0	0.283	7.2	0.531	13.5	OPT TP-150D	250
	KFLDA71	SC25-8	5/16"	8	0.335	8.5	0.516	13.1	1.299	33.0	0.354	9.0	0.283	7.2	0.531	13.5		250
	KFLDA72	SC25-10	3/8"	10	0.413	10.5	0.571	14.5	1.339	34.0	0.354	9.0	0.283	7.2	0.531	13.5		250
	KFLDA73	SC25-12	1/2"	12	0.512	13.0	0.65	16.5	1.457	37.0	0.354	9.0	0.283	7.2	0.531	13.5		250
A.W.G. 2 35mm ²	KFLDA80	SC35-6	1/4"	6	0.256	6.5	0.622	15.8	1.417	36.0	0.425	10.8	0.335	8.5	0.571	14.5	OPT TP-150D	200
	KFLDA81	SC35-8	5/16"	8	0.335	8.5	0.622	15.8	1.457	37.0	0.425	10.8	0.335	8.5	0.571	14.5		200
	KFLDA82	SC35-10	3/8"	10	0.413	10.5	0.622	15.8	1.496	38.0	0.425	10.8	0.335	8.5	0.571	14.5		200
	KFLDA83	SC35-12	1/2"	12	0.512	13.0	0.685	17.4	1.496	38.0	0.425	10.8	0.335	8.5	0.571	14.5		200

Copper Tubular Lugs (Type DTGA)

Copper Tubular Lugs

Brand	KF®
Finish/Coating	Tinned
Base Materials	Copper
Insulation Material	N/A
Brazed	Seam
Wire/Cable Type	Regular Wire
Color Code	Standard
MOQ	1000Pcs/item
Payment Terms	Based on orders
Delivery	FOB/CIF/DDP



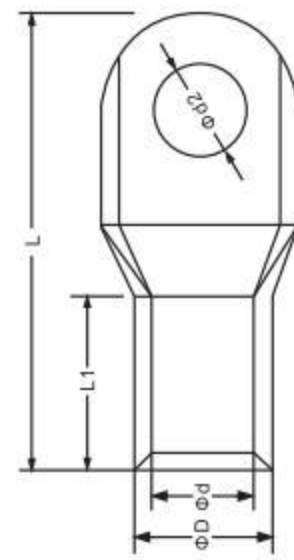
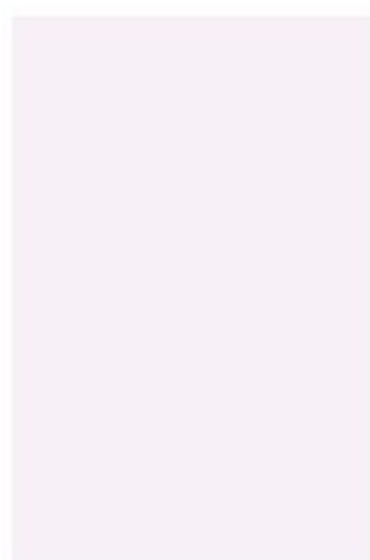
Spec(American AWG)	1/0	2/0	3/0	4/0	250/300MCM	300/350MCM
Spec(JIS AWG)	50	70	95	120	150	185
Spec(DIN AWG)						
Spec(GB mm²)						
Max Current	230	265	310	360	445	505



Wire Range	SKU#	MFG#	Stud Size		Dimension(mm)											Tool	pcs/pack	
			USA	Meric	d2	B	L	D	d	E								
A.W.G. 1/0 50mm²	KFLDA90	SC50-6	1/4"	6	0.256	6.5	0.713	18.1	1.614	41.0	0.492	12.5	0.386	9.8	0.669	17.0	OPT TP-150D	100
	KFLDA91	SC50-8	5/16"	8	0.335	8.5	0.713	18.1	1.673	42.5	0.492	12.5	0.386	9.8	0.669	17.0		100
	KFLDA92	SC50-10	3/8"	10	0.413	10.5	0.717	18.2	1.732	44.0	0.492	12.5	0.386	9.8	0.669	17.0		100
	KFLDA93	SC50-12	1/2"	12	0.512	13.0	0.717	18.2	1.732	44.0	0.492	12.5	0.386	9.8	0.669	17.0		100
A.W.G. 2/0 70mm²	KFLDAA0	SC70-6	1/4"	6	0.256	6.5	0.827	21.0	1.909	48.5	0.571	14.5	0.453	11.5	0.768	19.5	OPT TP-150D	100
	KFLDAA1	SC70-8	5/16"	8	0.335	8.5	0.827	21.0	1.91	48.5	0.571	14.5	0.453	11.5	0.768	19.5		100
	KFLDAA2	SC70-10	3/8"	10	0.413	10.5	0.827	21.0	1.97	50.0	0.571	14.5	0.453	11.5	0.768	19.5		100
	KFLDAA3	SC70-12	1/2"	12	0.512	13.0	0.827	21.0	1.97	50.0	0.571	14.5	0.453	11.5	0.768	19.5		100
	KFLDAA4	SC70-14	9/16"	14	0.591	15.0	0.827	21.0	1.97	50.0	0.571	14.5	0.453	11.5	0.768	19.5		100
	KFLDAA5	SC70-16	5/8"	16	0.669	17.0	0.906	23.0	1.97	50.0	0.571	14.5	0.453	11.5	0.768	19.5		100
A.W.G. 3/0 95mm²	KFLDAB0	SC95-8	5/16"	8	0.335	8.5	0.976	24.8	2.244	57.0	0.669	17.0	0.539	13.7	0.925	23.5	OPT TP-150D	50
	KFLDAB1	SC95-10	3/8"	10	0.413	10.5	0.976	24.8	2.244	57.0	0.669	17.0	0.539	13.7	0.925	23.5		50
	KFLDAB2	SC95-12	1/2"	12	0.512	13.0	0.976	24.8	2.244	57.0	0.669	17.0	0.539	13.7	0.925	23.5		50
	KFLDAB3	SC95-14	9/16"	14	0.591	15.0	0.976	24.8	2.244	57.0	0.669	17.0	0.539	13.7	0.925	23.5		50
	KFLDAB4	SC95-16	5/8"	16	0.669	17.0	1.024	26.0	2.244	57.0	0.669	17.0	0.539	13.7	0.925	23.5		50
A.W.G. 4/0 120mm²	KFLDAC0	SC120-8	5/16"	8	0.335	8.5	1.087	27.6	2.48	63.0	0.748	19.0	0.591	15.0	1.004	25.5	IZUMI EP-520C	30
	KFLDAC1	SC120-10	3/8"	10	0.413	10.5	1.087	27.6	2.48	63.0	0.748	19.0	0.591	15.0	1.004	25.5		30
	KFLDAC2	SC120-12	1/2"	12	0.512	13.0	1.087	27.6	2.48	63.0	0.748	19.0	0.591	15.0	1.004	25.5		30
	KFLDAC3	SC120-14	9/16"	14	0.591	15.0	1.087	27.6	2.48	63.0	0.748	19.0	0.591	15.0	1.004	25.5		30
	KFLDAC4	SC120-16	5/8"	16	0.669	17.0	1.087	27.6	2.48	63.0	0.748	19.0	0.591	15.0	1.004	25.5		30
	KFLDAC5	SC120-20	3/4"	20	0.827	21.0	1.087	27.6	2.48	63.0	0.748	19.0	0.591	15.0	1.004	25.5		30
A.W.G. 250/300MCM 150mm²	KFLDAD0	SC150-8	5/16"	8	0.335	8.5	1.201	30.5	2.776	70.5	0.827	21.0	0.657	16.7	1.142	29.0	IZUMI EP-520C	10
	KFLDAD1	SC150-10	3/8"	10	0.413	10.5	1.201	30.5	2.776	70.5	0.827	21.0	0.657	16.7	1.142	29.0		10
	KFLDAD2	SC150-12	1/2"	12	0.512	13.0	1.201	30.5	2.776	70.5	0.827	21.0	0.657	16.7	1.142	29.0		10
	KFLDAD3	SC150-14	9/16"	14	0.591	15.0	1.201	30.5	2.776	70.5	0.827	21.0	0.657	16.7	1.142	29.0		10
	KFLDAD4	SC150-16	5/8"	16	0.669	17.0	1.201	30.5	2.776	70.5	0.827	21.0	0.657	16.7	1.142	29.0		10
	KFLDAD5	SC150-20	3/4"	20	0.827	21.0	1.201	30.5	2.776	70.5	0.827	21.0	0.657	16.7	1.142	29.0		10
A.W.G. 300/350MCM 185mm²	KFLDAE0	SC185-10	3/8"	10	0.413	10.5	1.358	34.5	3.031	77.0	0.925	23.5	0.768	19.5	1.26	32.0	IZUMI EP-520C	10
	KFLDAE1	SC185-12	1/2"	12	0.512	13.0	1.358	34.5	3.031	77.0	0.925	23.5	0.768	19.5	1.26	32.0		10
	KFLDAE2	SC185-14	9/16"	14	0.591	15.0	1.358	34.5	3.031	77.0	0.925	23.5	0.768	19.5	1.26	32.0		10
	KFLDAE3	SC185-16	5/8"	16	0.669	17.0	1.358	34.5	3.031	77.0	0.925	23.5	0.768	19.5	1.26	32.0		10
	KFLDAE4	SC185-20	3/4"	20	0.827	21.0	1.358	34.5	3.031	77.0	0.925	23.5	0.768	19.5	1.26	32.0		10

Copper Tubular Lugs (Type DTGA)

Brand	KF [®]
Finish/Coating	Tinned
Base Materials	Copper
Insulation Material	N/A
Brazed	Seam
Wire/Cable Type	Regular Wire
Color Code	Standard
MOQ	1000Pcs/item
Payment Terms	Based on orders
Delivery	FOB/CIF/DDP



Spec(American AWG)	400MCM	500MCM	600/750MCM	800/1000MCM
Spec(JIS AWG)	240	300	400	500
Spec(DIN AWG)				
Spec(GB mm ²)				
Max Current	545	620	785	935
Spec(American AWG)	1000/1250MCM	1500/1750MCM		2000MCM
Spec(JIS AWG)	630	800		1000
Spec(DIN AWG)				
Spec(GB mm ²)				
Max Current	1065	1280		1385



Wire Range	SKU#	MFG#	Stud Size		Dimension(mm)											Tool	pcs/pack	
			USA	Metric	d2	B	L	D	d	E								
A.W.G.400MCM 240mm ²	KFLDAF0	SC240-10	3/8"	10	0.413	10.5	1.496	38.0	3.563	90.5	1.024	26.0	0.827	21.0	1.535	39.0	IZUMI EP-520C	10
	KFLDAF1	SC240-12	1/2"	12	0.512	13.0	1.496	38.0	3.563	90.5	1.024	26.0	0.827	21.0	1.535	39.0		10
	KFLDAF2	SC240-14	9/16"	14	0.591	15.0	1.496	38.0	3.563	90.5	1.024	26.0	0.827	21.0	1.535	39.0		10
	KFLDAF3	SC240-16	5/8"	16	0.669	17.0	1.496	38.0	3.563	90.5	1.024	26.0	0.827	21.0	1.535	39.0		10
	KFLDAF4	SC240-18	11/16"	18	0.748	19.0	1.496	38.0	3.563	90.5	1.024	26.0	0.827	21.0	1.535	39.0		10
	KFLDAF5	SC240-20	3/4"	20	0.827	21.0	1.496	38.0	3.563	90.5	1.024	26.0	0.827	21.0	1.535	39.0		10
A.W.G.500MCM 300mm ²	KFLDAG0	SC300-10	3/8"	10	0.413	10.5	1.72	43.7	3.937	100.0	1.181	30.0	0.945	24.0	1.713	43.5	IZUMI EP-1000A	5
	KFLDAG1	SC300-12	1/2"	12	0.512	13.0	1.72	43.7	3.937	100.0	1.181	30.0	0.945	24.0	1.713	43.5		5
	KFLDAG2	SC300-14	9/16"	14	0.591	15.0	1.72	43.7	3.937	100.0	1.181	30.0	0.945	24.0	1.713	43.5		5
	KFLDAG3	SC300-16	5/8"	16	0.669	17.0	1.72	43.7	3.937	100.0	1.181	30.0	0.945	24.0	1.713	43.5		5
	KFLDAG4	SC300-20	3/4"	20	0.827	21.0	1.72	43.7	3.937	100.0	1.181	30.0	0.945	24.0	1.713	43.5		5
A.W.G.600/750MCM 400mm ²	KFLDAH0	SC400-10	3/8"	10	0.413	10.5	1.949	49.5	4.331	110.0	1.339	34.0	1.063	27.0	1.811	46.0	IZUMI EP-1000A	5
	KFLDAH1	SC400-12	1/2"	12	0.512	13.0	1.949	49.5	4.331	110.0	1.339	34.0	1.063	27.0	1.811	46.0		5
	KFLDAH2	SC400-14	9/16"	14	0.591	15.0	1.949	49.5	4.331	110.0	1.339	34.0	1.063	27.0	1.811	46.0		5
	KFLDAH3	SC400-16	5/8"	16	0.669	17.0	1.949	49.5	4.331	110.0	1.339	34.0	1.063	27.0	1.811	46.0		5
	KFLDAH4	SC400-20	3/4"	20	0.827	21.0	1.949	49.5	4.331	110.0	1.339	34.0	1.063	27.0	1.811	46.0		5
A.W.G.800/1000MCM 500mm ²	KFLDAI0	SC500-10	3/8"	10	0.413	10.5	2.165	55.0	4.843	123.0	1.496	38.0	1.181	30.0	1.969	50.0	IZUMI EP-1000A	5
	KFLDAI1	SC500-12	1/2"	12	0.512	13.0	2.165	55.0	4.843	123.0	1.496	38.0	1.181	30.0	1.969	50.0		5
	KFLDAI2	SC500-14	9/16"	14	0.591	15.0	2.165	55.0	4.843	123.0	1.496	38.0	1.181	30.0	1.969	50.0		5
	KFLDAI3	SC500-16	5/8"	16	0.669	17.0	2.165	55.0	4.843	123.0	1.496	38.0	1.181	30.0	1.969	50.0		5
	KFLDAI4	SC500-20	3/4"	20	0.827	21.0	2.165	55.0	4.843	123.0	1.496	38.0	1.181	30.0	1.969	50.0		5
A.W.G.1000/1250MCM 630mm ²	KFLDAJ0	SC630-10	3/8"	10	0.413	10.5	2.559	65.0	5.315	135.0	1.772	45.0	1.378	35.0	2.205	56.0	IZUMI EP-1000A	5
	KFLDAJ1	SC630-12	1/2"	12	0.512	13.0	2.559	65.0	5.315	135.0	1.772	45.0	1.378	35.0	2.205	56.0		5
	KFLDAJ2	SC630-14	9/16"	14	0.591	15.0	2.559	65.0	5.315	135.0	1.772	45.0	1.378	35.0	2.205	56.0		5
	KFLDAJ3	SC630-16	5/8"	16	0.669	17.0	2.559	65.0	5.315	135.0	1.772	45.0	1.378	35.0	2.205	56.0		5
	KFLDAJ4	SC630-20	3/4"	20	0.827	21.0	2.559	65.0	5.315	135.0	1.772	45.0	1.378	35.0	2.205	56.0		5
A.W.G.1500/1750MCM 800mm ²	KFLDAK0	SC800-20	3/4"	20	0.827	21.0	2.835	72.0	6.693	170.0	1.969	50.0	1.535	39.0	2.362	60.0	IZUMI EP-1000A	1
A.W.G.2000MCM 1000mm ²	KFLDAL0	SC1000-22	7/8"	22	0.906	23.0	3.189	81.0	7.874	200.0	2.205	56.0	1.732	44.0	3.425	87.0	IZUMI EP-1000A	1